



- Package and track mix of goods and same items in any package, pallet and container.
- Directed Picking and Pick Sheets calculates the best case pack and pallet to pick.
- Know which lot and serial numbers are in a package in your inventory and sent to your customers.
- Print tags and labels detailing the contents.
- Know package type quantity available inventory by location
- Save time counting inventory by selecting a one ID for all of inventory in it.
- In the warehouse, real time packaging, picking, transfers and access to the contents by approved RF handheld integrators.
- Manufacturers produce goods into pallets and case packs in B/M productions and W/O completions.
- Provide customers contents of pallets and track its history.
- Select packages by the package type in most transactions as well

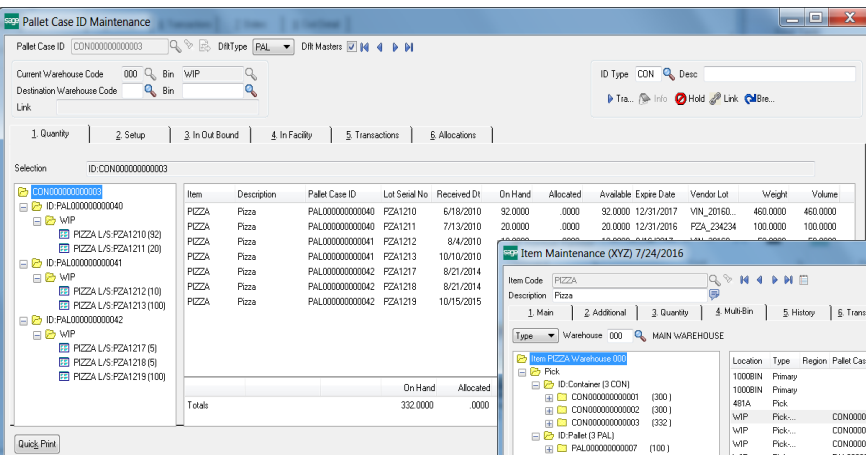
USER-FRIENDLY

View in your inventory, build, track, sell and issue pallet and case packages without leaving Sage 100. With the Sage 100 common interface and seamlessly integrated, ACS Multi-bin and WMS License Plate makes it exceptionally easy to use.

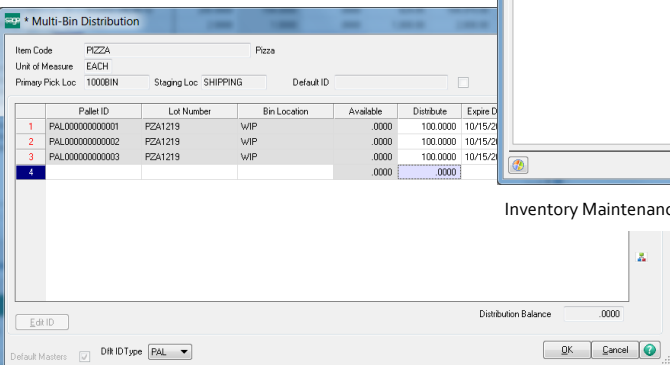
Save time shipping pallets to customers because the contents of pallets can be auto-assigned to the shipment within a couple clicks. Also you can save time by using directed picking to pick the best inventory, the best pallets and best packages to an order. The wave pick sheet helps the pick in the optimum flow through warehouse and down aisles.

ADVANCED FUNCTIONALITY BUILT-IN

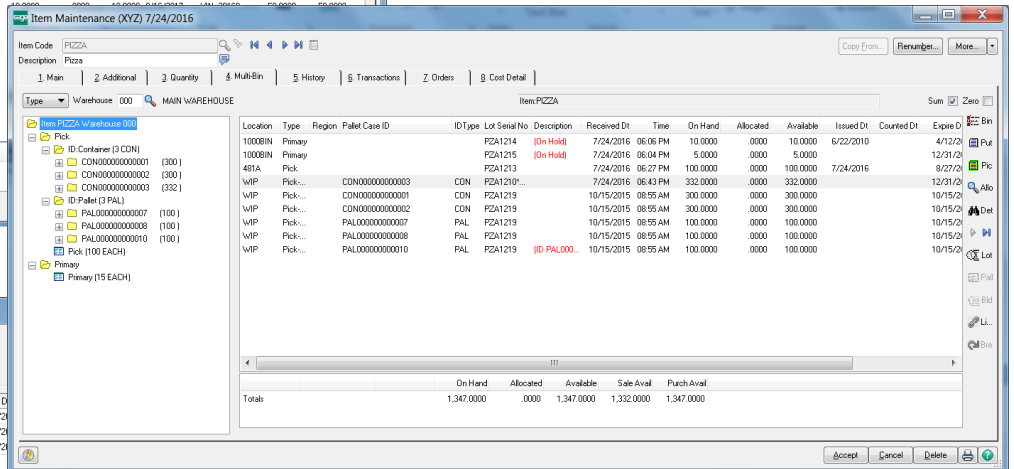
ACS Multi-bin and WMS License Plate provides full nested multi-level pallet, case pack and container inventory along with your regular multi-bin inventory. Using your own packages for all of your sizes of pallets and case packages, IDs can contain a group of any items or just a single item. Same item pallets and mixed pallets, lot serial numbers and all inventory valuations are licensed. All inventory in packs and pallets is viewable in tree-form throughout the system.



Pallet ID Maintenance screen.



Distribution of license plates is performed in the same manner as distribution of multi-bin inventory and lot serial inventory.



Inventory Maintenance Screen. All inventory is integrated. Palletted and Containers reflect IDs and package types.

LICENSE PLATE, PALLET AND CASE PACK INVENTORY FOR SAGE 100 HIGHLIGHTS

<p>PALLET CASE ID MAINTENANCE BUSINESS OBJECT</p>	<p>Provides view of linked inventory and tree display drills down to attached IDs. Tracks inventory coming in from transactions still pending - in receipt of goods and to be produced. Provides Quick Transfer to another location, Break to ID levels and standard unit of measure, Link IDs to other IDs. Provides setup for calculated weight and volume. Transaction history of inventory movement and changes of allocations.</p> <p>Full business object usage. UDF creation and printing.</p>
<p>PALLET CASE ID TYPE NEXT NUMBER</p>	<p>The next ID code is selected by the ID type. Next number is available in the maintenance screens and for all transactions. ID type links to Unit Of Measure code and provides separation of container type and inventory counts for each type. Type code is selectable in all transaction screens to provide quick segregation of container type.</p>
<p>BREAK</p>	<p>Interactive Break selection, provides options to break ID to different options. Inventory can break off to the standard unit of measure for the entire ID. Break off by level allows levels of IDs to break off so all case packs and all master packs can be split off the ID. Can choose to automatically break a package for a sale and give instructions to the warehouse.</p>
<p>PRINTING PALLET TAGS</p>	<p>Pallet Tags always print posted inventory associated with a specific Pallet ID. Nest levels can be printed and unposted inventory for goods selected in receipt of goods and finished goods in B/M and W/O.</p>
<p>PALLET AND CASE PACK TRANSFERS AND LINK</p>	<p>Transfer pallet and case ID to other locations. Inventory can be transferred to and out of an ID. IDs can be Linked to other IDs. ID can be link to the top or bottom or in any level of the ID. Transaction history detail is retained for transfers and links.</p>
<p>AUTO-ASSIGNMENT OF IN AND OUT-BOUND ITEM INFORMATION</p>	<p>All transactions post to and relieve from Pallet IDs. Transactions will auto-fill In-Bound or Out-Bound information in the ID to provide quick history of receipt and sale. Purchase Order Receipt of Goods - Including Vendor, PO Number, and Receipt Date. Sales Order Invoicing or Shipping - Including Customer, Invoice Number, and Ship Date.</p>
<p>PALLET ID AND CASE PACK EXPLOSION</p>	<p>Pallet and case pack explosion is available through Sales Order Multi-Bin Distribution screens in SO Entry and SO Invoicing, Physical Count and Count Card Entry, Manufacturing builds and inventory Transaction Transfers.</p>
<p>CAPACITY MANAGEMENT</p>	<p>Total number of cartons, total quantities, gross weight and gross volume are calculated automatically from the specific item information from item maintenance. Override capability is available for those calculated fields.</p>
<p>HISTORY</p>	<p>Pallet and Case ID history is retained for issued and sold inventory. Provides history drill down and ID history reprint from A/R Invoice History, Bill of Materials Production and Work Order Issues.</p>
<p>DIRECTED PICKING AND DIRECTED PUTAWAY</p>	<p>Manual and automatic selections for Pallet and Case IDs. System optimizes the ID selected by the link to the Unit of Measure codes. Putaway options for the number of ID types that can fit in locations.</p>
<p>PALLET AND CASE PACK CREATION IN MANUFACTURING</p>	<p>From Bill of Materials production entry and Work Order completions, finished goods can be packaged into case packs and pallets into inventory. Can choose to do a single level or multi-level packaging. Grid data entry screen allows overrides to computed packaging.</p> <p>Default settings for manufacturing can be setup by item or product line. Setups for standard quantity per container and for quantity of package per pallet.</p>
<p>FULL INTEGRATION WITH OTHER ACS MULTI-BIN ENHANCEMENTS</p>	<p>Items within Pallet Case IDs will continue to track individual item expiration dates or vendor lots. Direct picking and directed putaway algorithms apply. Wave batch and shipping control also applies.</p>

