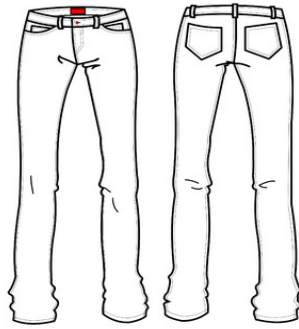




APPAREL MANAGEMENT FOR SAGE 100 ERP

FOR GARMENT, FOOTWEAR & ACCESSORIES DISTRIBUTION
SEASON AND ROYALTY HANDLING
UPC PROCESSING
ALLOCATION MANAGEMENT



ACS Apparel Management provides modern apparel manufacturers and distributors with a full suite of specialized enhancements for the Sage 100 ERP system.

ACS Apparel is a full-featured, high-performance solution for handling the organization, manufacturing, purchasing, sale, and distribution needs of the apparel industry, while working in conjunction with the standard Sage 100 ERP modules of Inventory, Purchase Order, Sales Order, RMA, Bill of Materials and Work Order¹ along with providing complete integration with the General Ledger and accounting processes. ACS Apparel provides Color & Size functionality, Product Divisions, Pre-Book & At-Once Season handling, UPC processing and much more.

ACS Apparel also provides integration with third party solutions to bring extended functionality to the system:

- 3PL Warehouse Management
- EDI Integration
- Web Based Sales Solutions
- Multi-Currency Processing



Color Way Selection (XYZ) 7/6/2011

	Color	Description	Select
1	BLACK	Black	<input checked="" type="checkbox"/>
2	GREY	Grey	<input type="checkbox"/>
3	TAN	Tan	<input checked="" type="checkbox"/>
4	WHITE	White	<input checked="" type="checkbox"/>

Apparel Distribution

Item Code: T4 SHIRT T4 Shirt Desc

Unit of Measure: EACH Season: TEST [Pre-Book] Sales Period: 002

	Color	Size	Ordered	Shipped	Available	Order	Unit Price	Extension
1	BLACK	S	100	0	1,412.00	100.00	14.00	1,400.00
2	BLACK	M	100	0	1,381.00	100.00	14.00	1,400.00
3	BLACK	L	100	0	1,383.00	100.00	14.00	1,400.00
4	BLACK	XL	100	0	1,386.00	100.00	14.00	1,400.00
5	BLACK	2XL	100	0	1,513.00	100.00	14.25	1,425.00
6	BLACK	3XL	100	0	1,503.00	100.00	14.50	1,450.00
7	WHITE	S	200	0	1,324.00	200.00	14.00	2,800.00
8	WHITE	M	200	0	1,288.00	200.00	14.00	2,800.00
9	WHITE	L	200	0	1,288.00	200.00	14.00	2,800.00
10	WHITE	XL	200	0	1,288.00	200.00	14.00	2,800.00
11	WHITE	2XL	200	0	1,288.00	200.00	14.25	2,850.00
12	WHITE	3XL	200	0	1,288.00	200.00	14.50	2,900.00
13	TAN	S	150	0	1,325.00	150.00	14.00	2,100.00
14	TAN	M	150	0	1,324.00	150.00	14.00	2,100.00
15	TAN	L	150	0	1,325.00	150.00	14.00	2,100.00
16	TAN	XL	150	0	1,325.00	150.00	14.00	2,100.00
17	TAN	2XL	150	0	1,325.00	150.00	14.25	2,137.50
18	TAN	3XL	150	0	1,327.00	150.00	14.50	2,175.00

Quantity Ordered: 2,700.00

(On Hand: 1148, Supply: 287, Demand: 295)





APPAREL MANAGEMENT FOR SAGE 100 ERP

FOR GARMENT, FOOTWEAR & ACCESSORIES DISTRIBUTION
SEASON AND ROYALTY HANDLING
UPC PROCESSING
ALLOCATION MANAGEMENT

COLOR AND SIZE HANDLING	Color and Size matrices can be maintained and assigned to individual items, streamlining entry setup. Color and Size sort orders are also maintained and assigned to provide items the proper display and reporting output desired (e.g. Size sorted). All color and size reporting is provided “horizontally” across the page vs. “vertically”. Price and cost by size/color provided.
SEASONAL OFFERINGS	Handle the seasonal nature of the apparel business by allowing for Pre-Book and At-Once Sales Ordering, Domestic and International Start / Cut-Off / Ship Date restrictions, and Auto Generation of Purchase Orders by Season (Manufacturing Automation coming soon).
LINE MANAGEMENT	Organize Items into Product Lines and Product Lines into Product Divisions. Utilize a unique UPC structure for each Product Division and automatically assign (and reuse) UPC codes either during item creation or at a later date. Allow or restrict users from selling items cross Product Divisions. Active and Current Item restrictions and warnings provided.
LINE DISCOUNT HANDLING	Assign line discount G/L Accounts to Product Lines. Allows for the allocation of “Totals Screen” discounts across all Items / Colors / Sizes and Line Discount Handling at the Item / Color / Size level.
MANUFACTURING	Bill of Materials and Work Order modules have been enhanced to accommodate apparel requirements. Process Work Orders or BoM Productions seamlessly utilizing Pick Sheets, Travelers and Production Line reporting.
ORDER ENTRY GRID CONTROLS	Advanced Order Entry Color Size Distribution features - choose applicable color ways prior to Line Entry, Color / Size Quantity, copy by color or for entire item and previous line item quantity copying.
SALES ORDER ALLOCATIONS	Optional Allocation system is provided. Choose to Auto Generate Allocations for “Complete” or “Partial” Order shipment requirements. Utilize data entry screens for editing.
EDI AND 3RD PARTY WAREHOUSE INTEGRATION	With a top-notch EDI partner, ACS Apparel can provide EDI Purchase Order (850), Invoice (810) and Advanced Ship Notice (856) integration along with 3rd Party Warehouse Shipping / Shipment Advises (940 / 945) and PO Shipping / Receipts Advises (943 / 944).
SALESPERSON MATRIX HANDLING	Assign multiple Salespersons and their commission rates to a Salesperson Matrix record. Assign the entire matrix to customers. Allows for editing in Sales Order Entry and Sales Order Invoice Data Entry. Posts appropriately to the Commissions Detail files.
ROYALTY HANDLING	Enhancing the Sage 100 ERP’s Salesperson commission system, ACS Apparel provides advanced Royalty Handling for up to 4 Salespersons per Item providing percentage and / or amount assignments. Writes to Commission Detail files and to a new detailed Royalty Tracking file for Crystal Reports writing.
INTEGRATION WITH OTHER PRODUCTS¹	Compatible with Multi-Currency, Advanced Landed Cost and Virtual Warehouse / Container Tracking integration

¹ Earmarked products coming soon. Some information contained may refer to an ACS add-on to the base product.